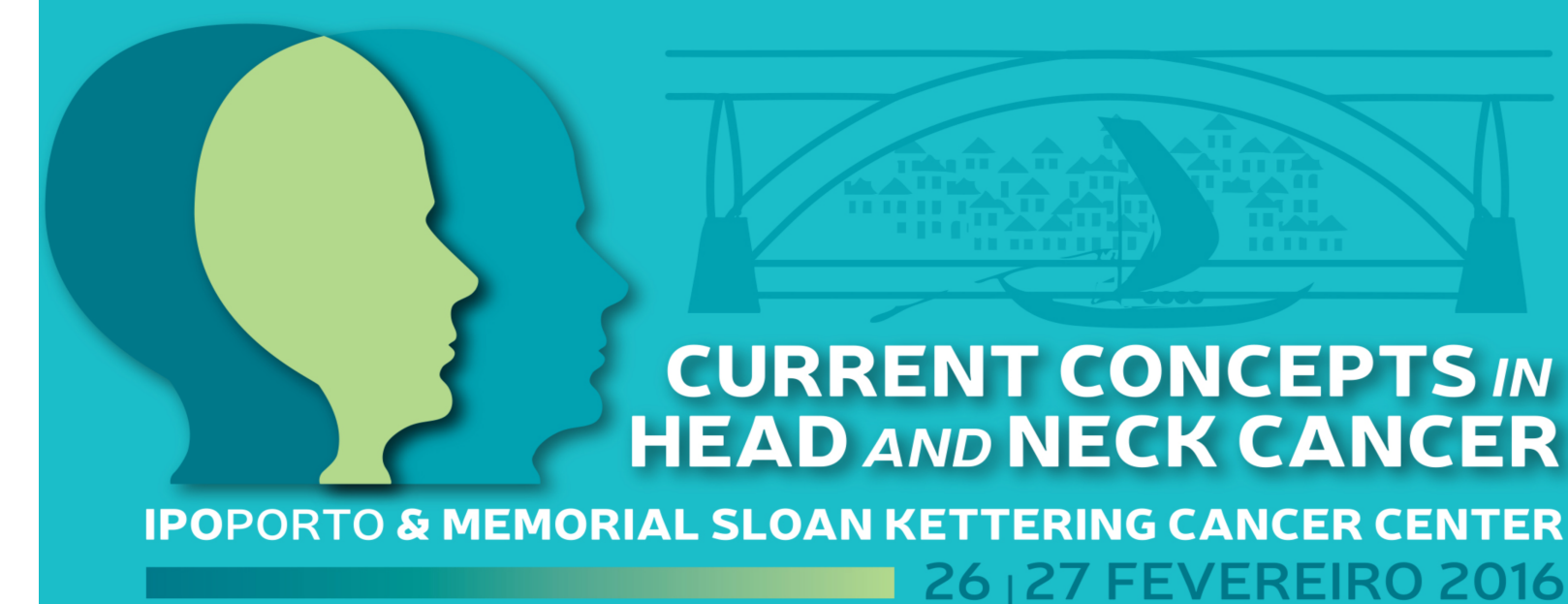


SINONASAL ADENOCARCINOMA

13 YEARS EXPERTISE OF HOSPITAL DE BRAGA ENT DEPARTMENT

Miguel Breda, Sara Pereira, Diana Silva, Ana Menezes, Daniela Ribeiro, Nuno Marçal, Sérgio Vilarinho, Luís Dias

ENT Department of Hospital de Braga



INTRODUCTION

The sinonasal cancer (SN) is characterized by its aggressiveness and low incidence (3.5 / 100 000 / year). It corresponds to 3% of Head and Neck's tumors, with males affected twice as often as females. The wood dust exposure is a well known risk factor, however, nickel, chromium and tobacco are also associated to SN cancer. Overall, adenocarcinoma (AD) represents about 22% of cases of malignant SN cancer. AD usually arises in the ethmoid (40%) and maxillary sinus (20%). The surgical approach to AD mainly comprises Endoscopic Sinus Surgery (ESS), External Surgery, and the combination of both techniques. Although there is no consensus, after surgery, most Oncology Centers advocate the use of Radiotherapy (RT).

METHODS

Retrospective analysis of medical reports of SN cancer's patients diagnosed and treated by our department between 2002 and 2014. Only AD were included. Finally we compared our survival rates with other patient's series. SPSS® 22 was used for statistic analysis. Survival rates were calculated using Kaplan-Meier.

STUDIED VARIABLES

- Gender
- Age at diagnosis
- Profession
- Symptoms
- Affected nasal sinus
- TNM Staging
- Treatment

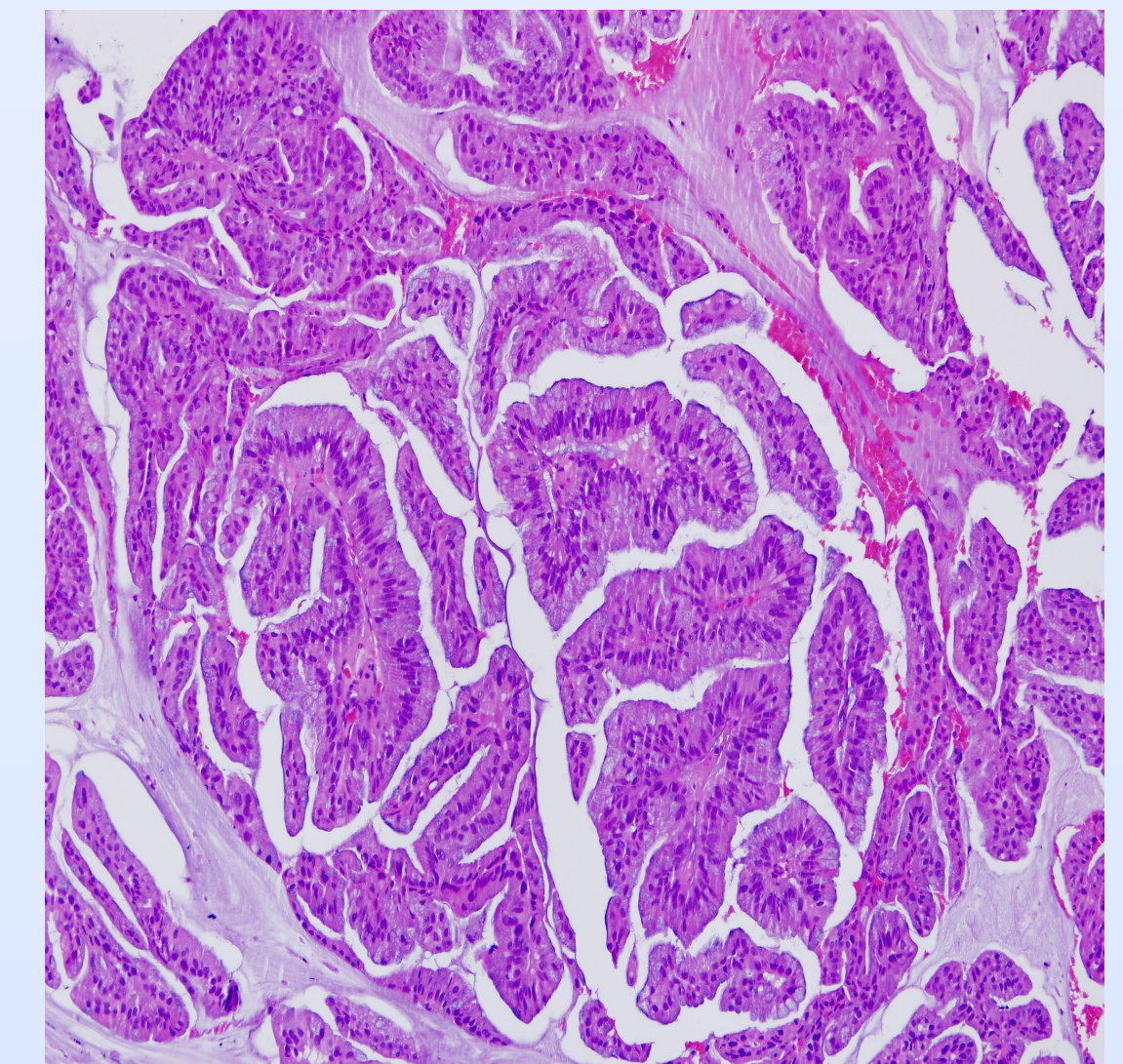


Fig.1 – Intestinal AD – All of our patients had this kind of AD. Histologically resembles intestinal mucosa. (Ana Ferreira – Pathology Lab – Hospital de Braga ©)

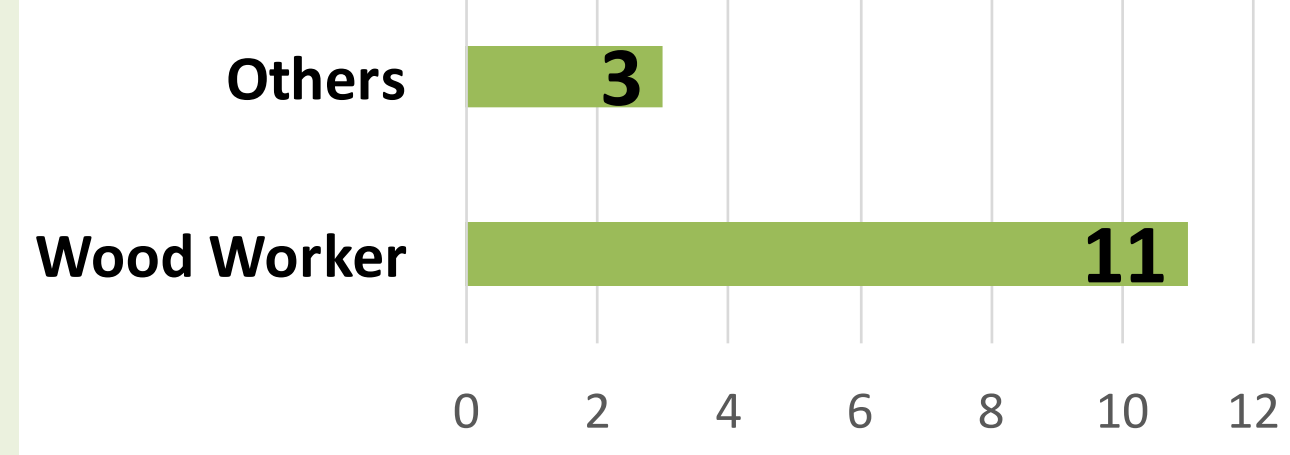
RESULTS

Sample size (n=14)

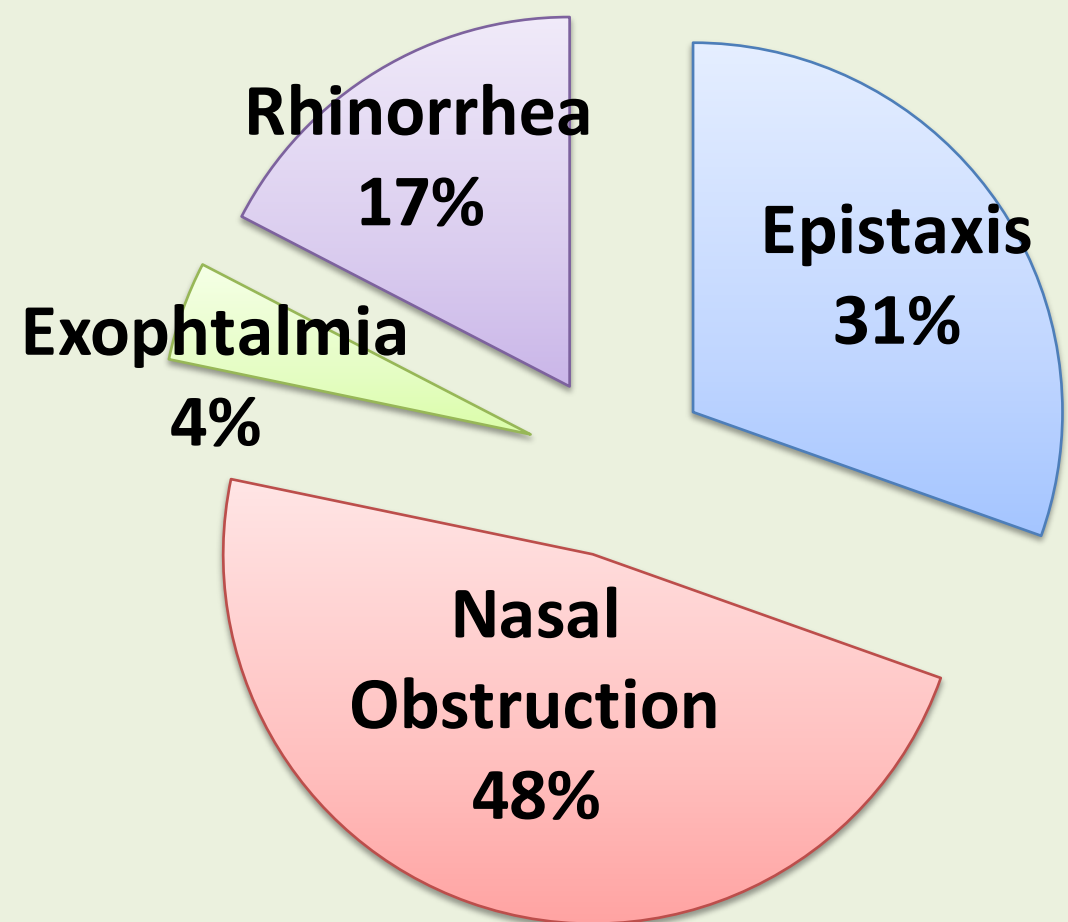
13 males
1 female

mean age: 60,5 +/- 11,5 years

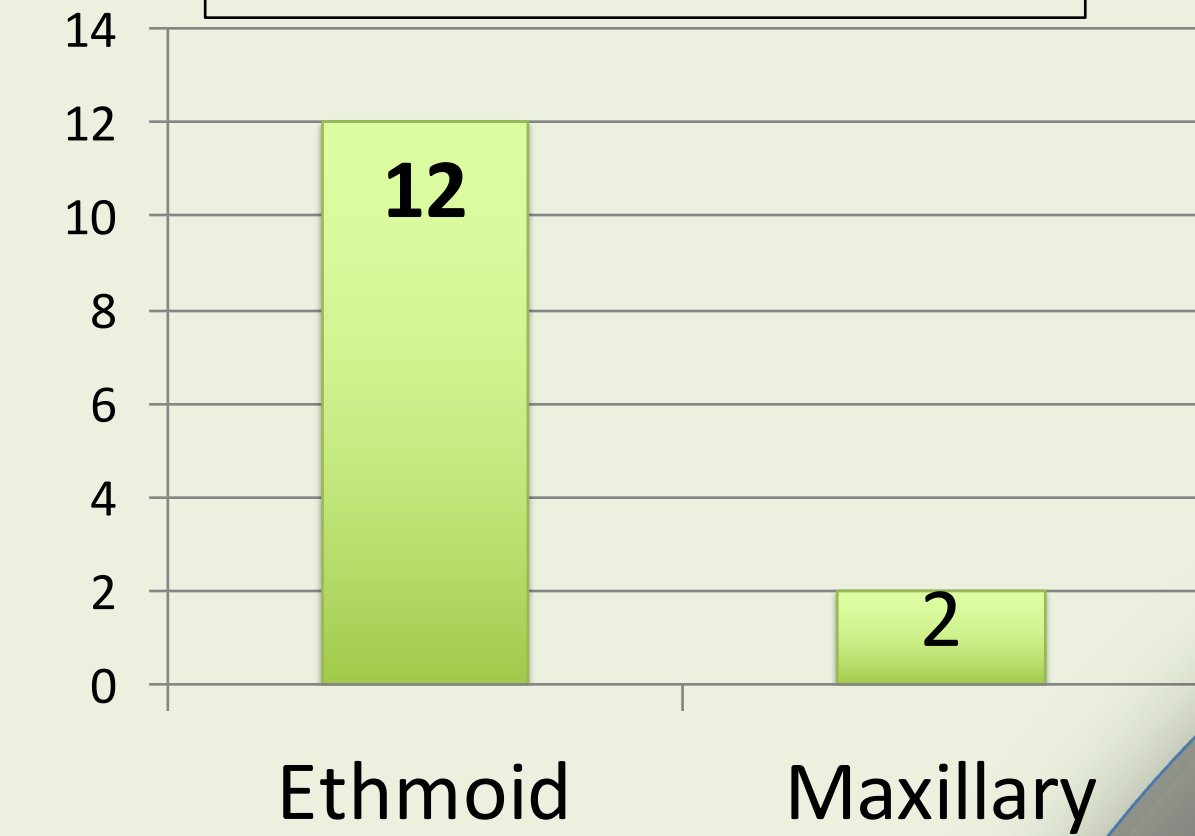
Profession



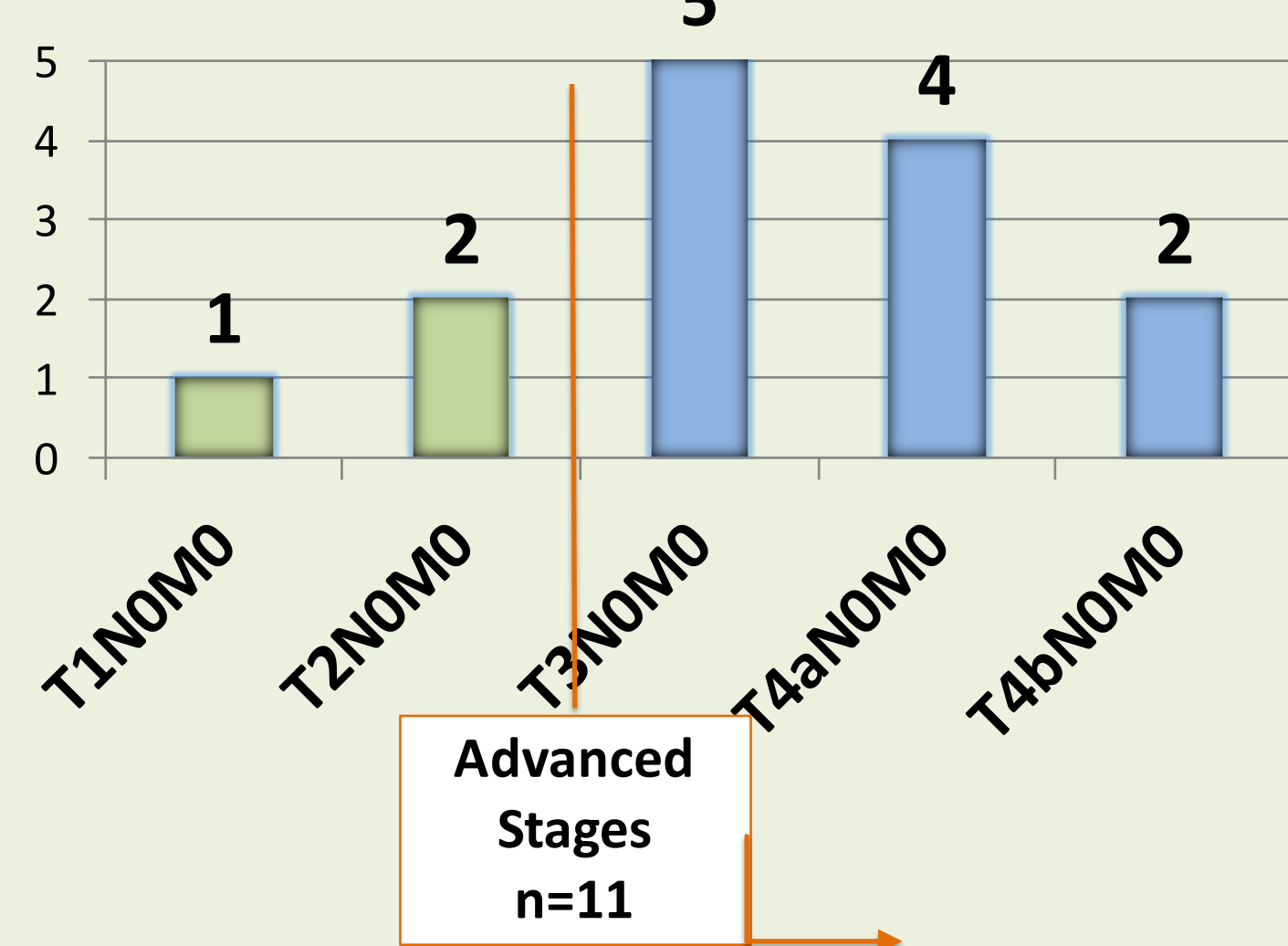
Main Symptoms



Affected Nasal Sinus

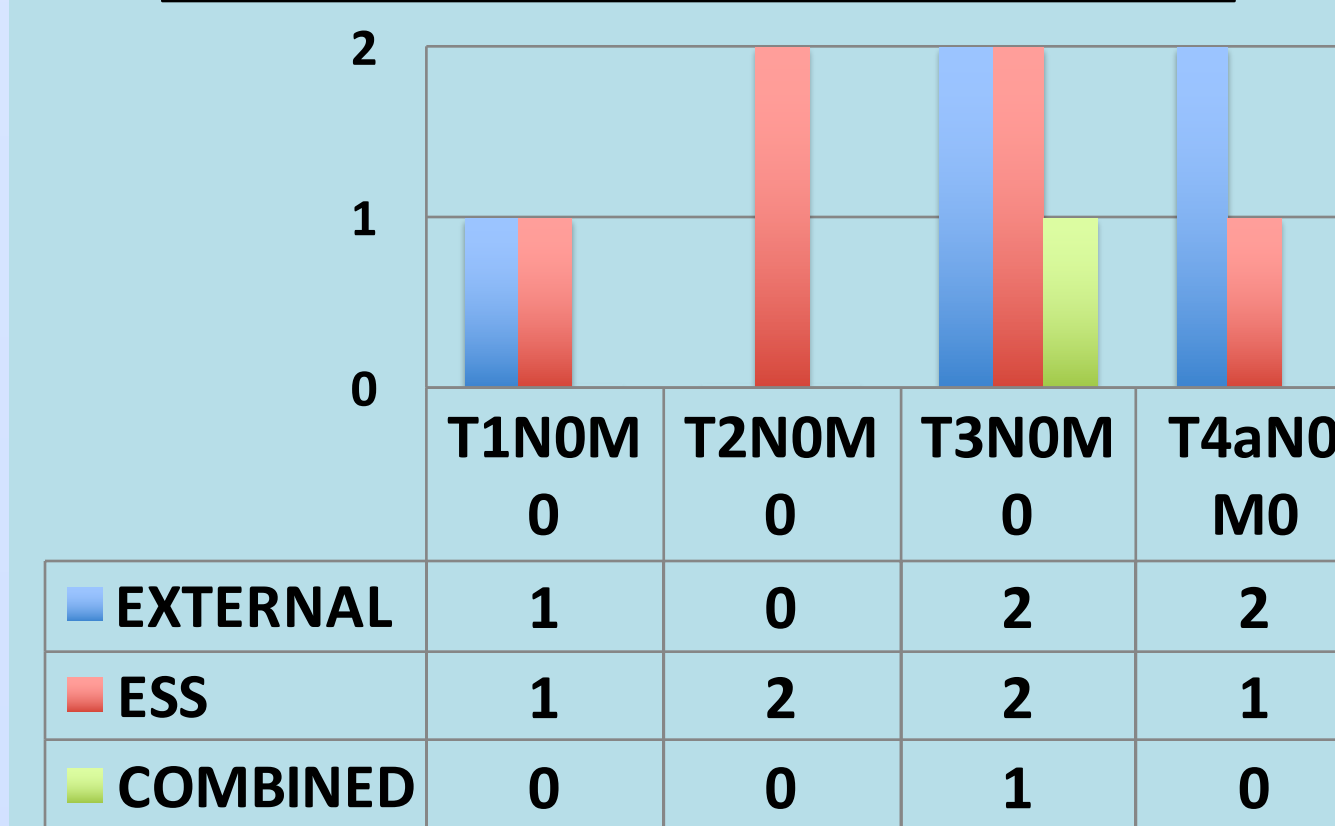


TNM Staging

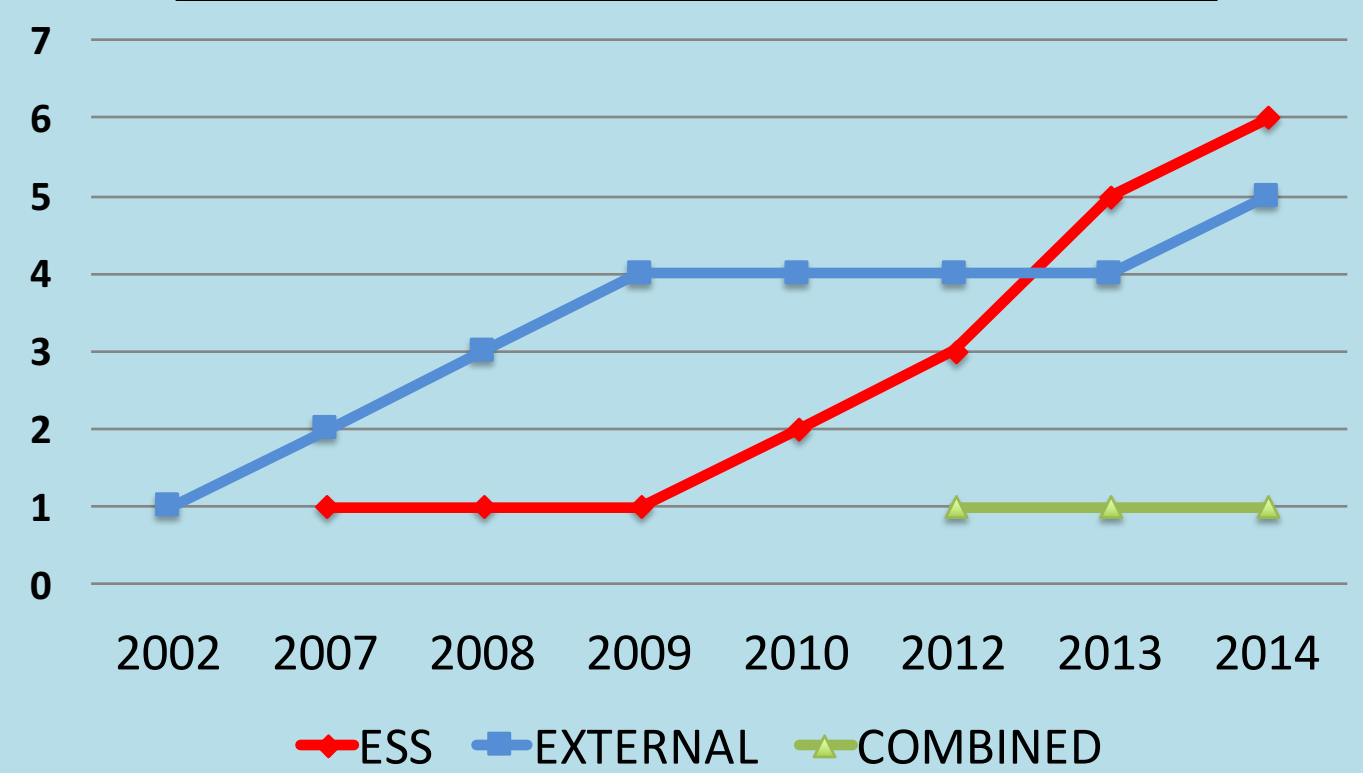


TREATMENT

Surgical Modality by TNM Stage



Surgical Modality (Aggregated)



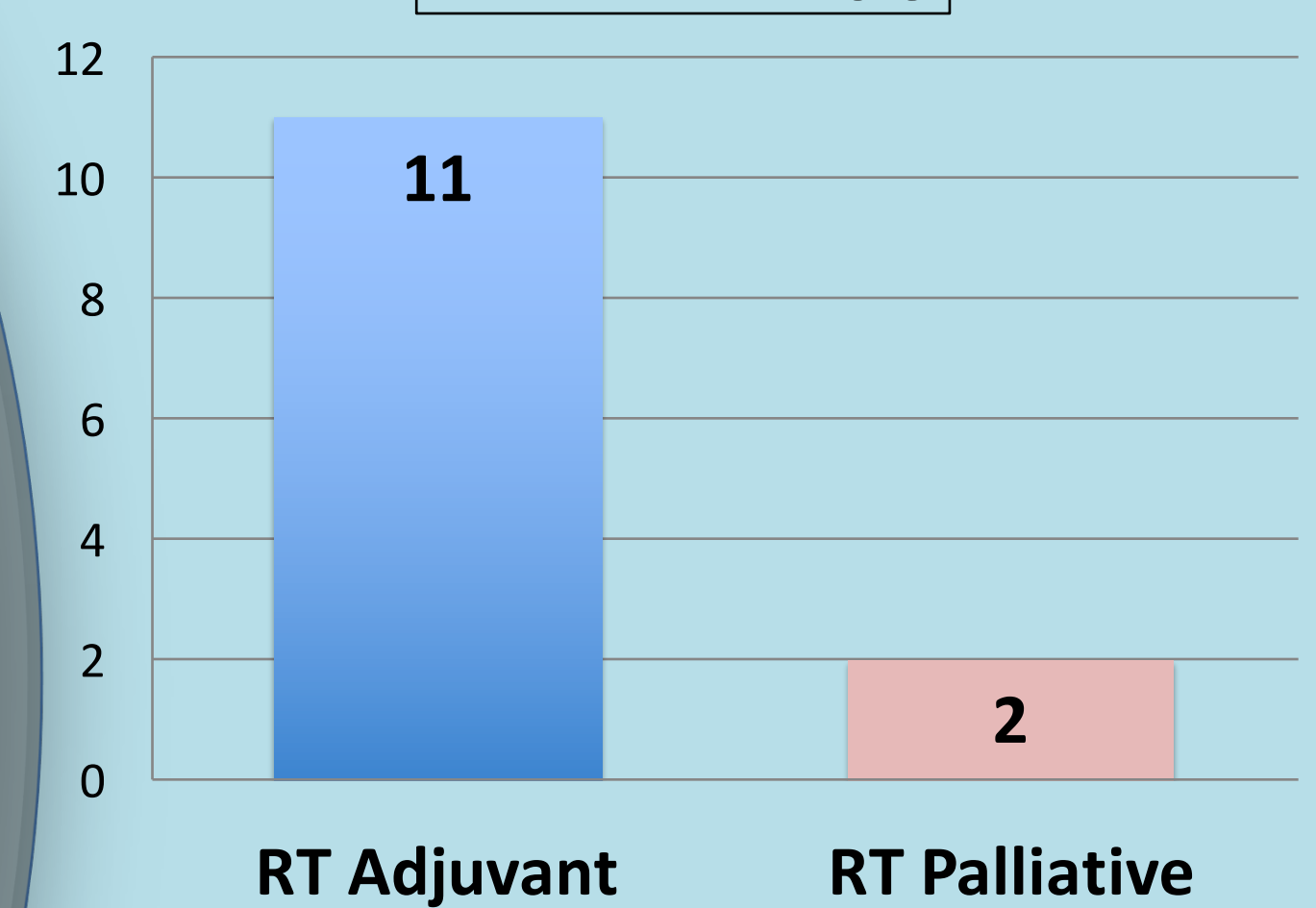
Post-Op Recurrence- n=5 | Disease-free Time (mean): 31 months
1 after ESS
1 after Combined
3 after External

Try see thru this e-endoscope!



With a QR Code Reader see on your smartphone a ESS short movie performed by our department.

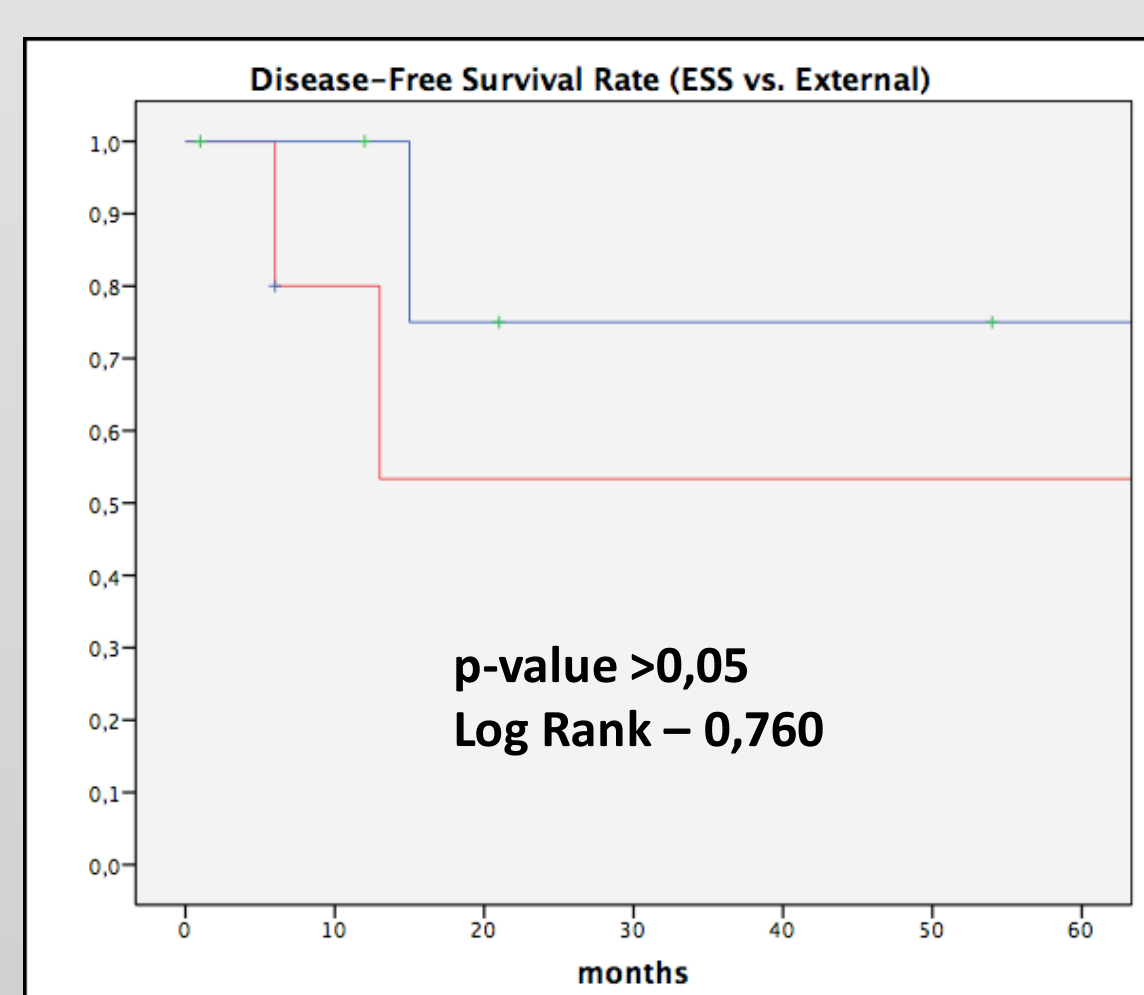
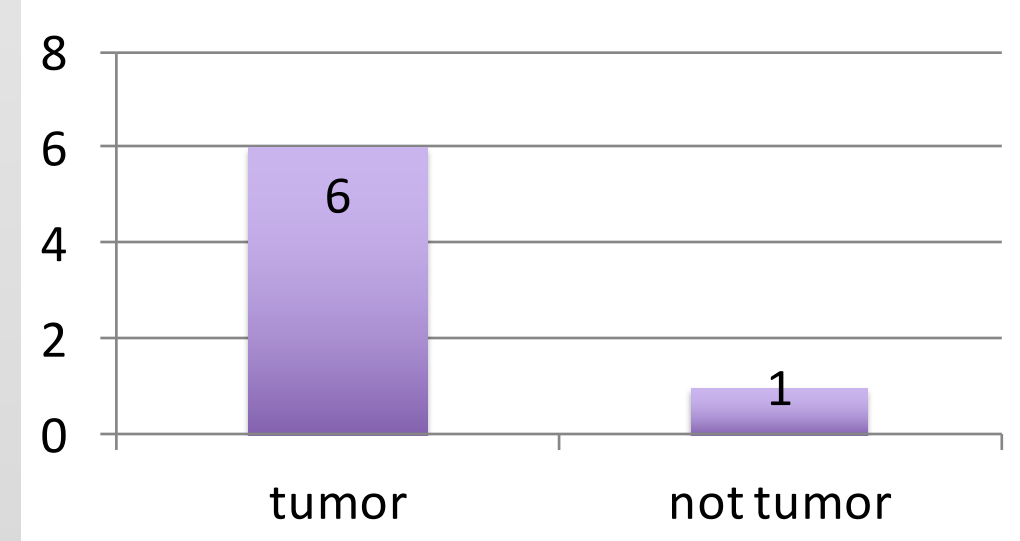
Radiotherapy



SURVIVAL RATES

7 deaths

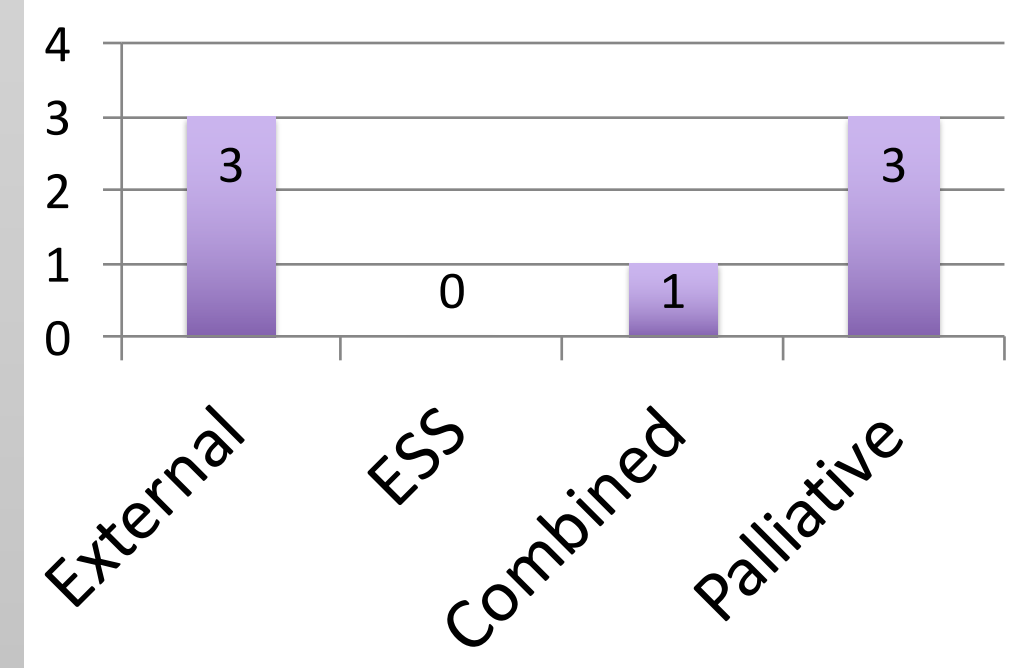
Death's cause



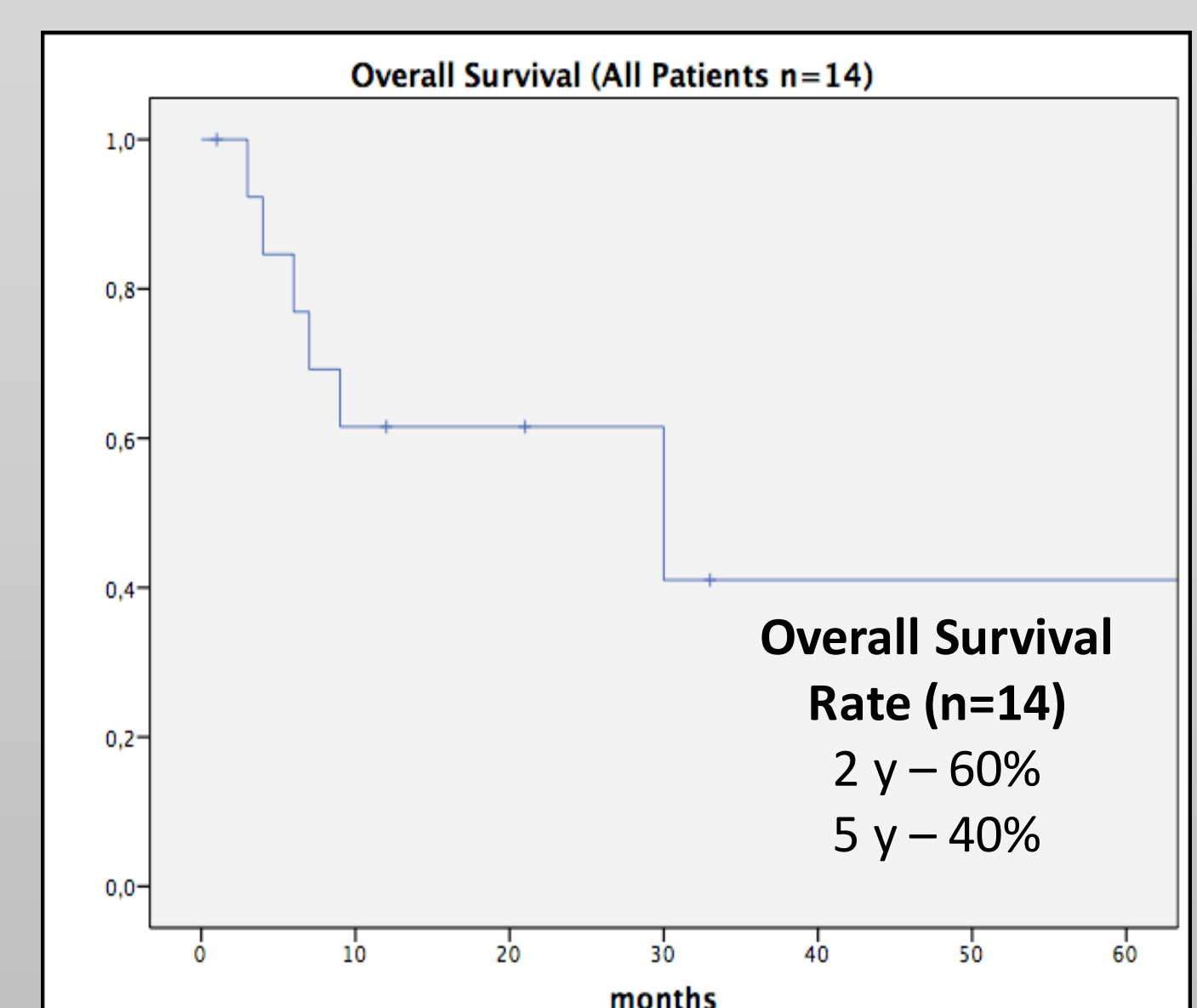
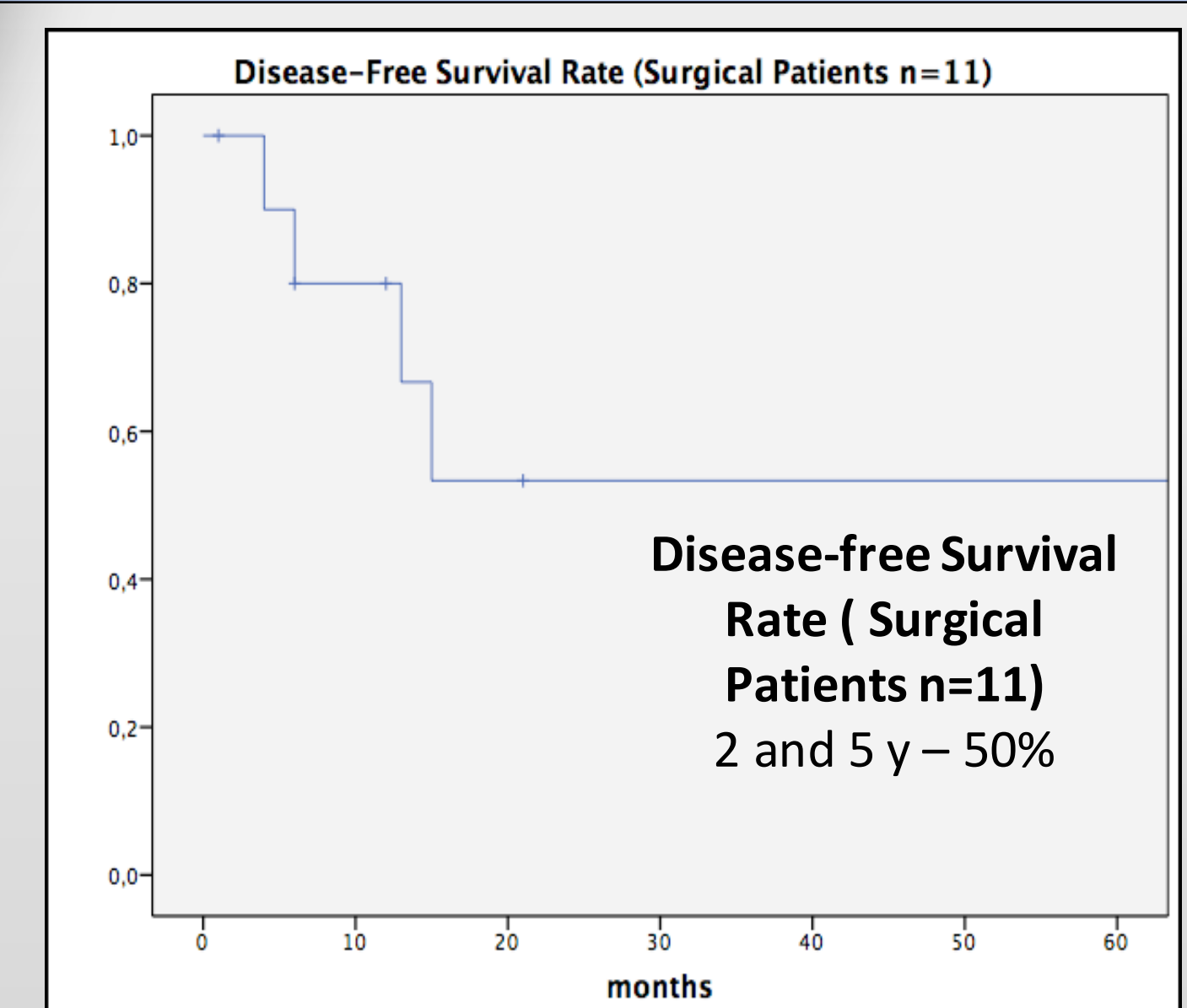
Disease-Free Survival Rate (ESS vs External)
ESS - 2 and 5 y – 75%
External - 2 and 5 y – 55%

not statistically significant

Surgical Modality / Death



First Author	AD cases(n)	Management	5 y overall survival rate
Kraus (1992)	8	Ext+RT	37%
Dilhuydy (1992)	13	Ext+RT	44%
Shah (1997)	17	Ext+RT	57%
Liétin (2006)	60	ESS+Ext+RT	46%
Michel(2003)	15	Comb/Ext+RT	53%
Hospital de Braga (2014)	14	ESS+Ext+RT	40%



DISCUSSION & CONCLUSION

As expected, our population is almost represented by wood workers, all males. The mean age at diagnosis is 60,5, with advanced stage in 11 of 14 cases, which is consistent with the literature. In fact, the late diagnosis of this disease associated with poor outcomes seriously compromises the prognosis and possible curative treatment. This review also highlights the greater use of ESS as surgical modality. Some facts have contributed to this tendency: studies performed in patients treated entirely by ESS were comparable to the results obtained in External approach series[Lund (2007) and Bogaerts (2008)]. In general, the most important Oncology Centres agree that surgery is the mainstay of treatment, regardless of modality. This retrospective analysis shows that our results approaches the practices and numbers of many series already published. Finally we think that is important to create screening policies directed to the wood workers, in order to recognize early AD patients and reach better outcomes.

References

- Lund V, Stammberger H, Nicolai P, Castelnuovo P, et. al. European Position Paper on Endoscopic Management of Tumours of the Nose, Paranasal Sinuses and Skull Base. Rhinology. Supplement 22. 2010.
Lund V, Howard D, Wei W. Adenocarcinoma. In: Lund V, Howard D, Wei W (Eds.) Tumors of the nose, sinuses, and nasopharynx, Stuttgart, Thieme; 2014:pp137-50.
Gabory L, Maunoury A, Maurice-Tyson S, Abdulkhaleq HM, et. al. Long-Term Single-Center Results of Management of Ethmoid Adenocarcinoma: 95 Patients over 28 years. Ann Surg Oncol. 2010 Feb;17:1127-34.
Jégoux F, Métreau A, Louvel G, Bedfert C. Paranasal sinus cancer. Eur Ann Otorhinolaryngol Head Neck Dis. 2013 Dec;130(6):327-35.